

State of Wyoming Corner Record

(In compliance with the **CORNER PERPETUATION AND FILING ACT**, Wyoming Statutes, 1997 Section 33-29-140 et. seq., and the Rules and Regulations of the Board of Professional Engineers and Professional Land Surveyors)

Reverse side of this form may be used if more space is needed.

Record of original survey and citation of source of historical information (if corner is lost or obliterated). Description of corner monumentation evidence found and/or monument and accessories established to perpetuate the location of this corner. Sketch of relative location of monument, accessories, and reference points with course and distance to adjacent corner(s) (if determined in this survey). Method and rationale for re-establishment of lost or obliterated corner.

Found: 2" BRASS CAP UNDER EAST-WEST FENCE LINE

Set: LATH IN FENCE LINE ABOVE CAP.



LATITUDE AND LONGITUDE = NAD 1983

DISTANCES = WGS84 ELLIPSOID

NOTE: COORDINATES DERIVED USING MULTIPLE NGS OBSERVATIONS THROUGH THE ONLINE POSITIONING USER SERVICE AND A SURVEY GRADE GPS RECEIVER.

Date of Field Work: Sept 6, 2013

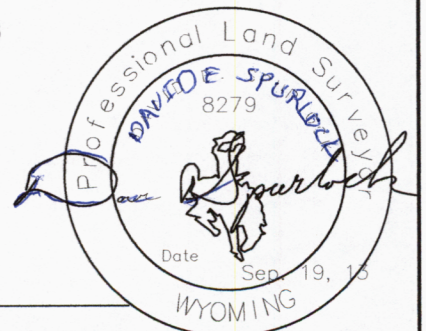
Office Reference: 20115

Firm/Agency, Address

Cross Index Plat

	1	2	3	4	5	6	7	8	9	10	11	12	13	14	15	16	17	18	19	20	21	22	23	24	25	
A	+	+	+	+	+	+	+	+	+	+	+	+	+	+	+	+	+	+	+	+	+	+	+	+	+	A
B	+	+	+	+	+	+	+	+	+	+	+	+	+	+	+	+	+	+	+	+	+	+	+	+	+	B
C	+	6	+	5	+	4	+	3	+	2	+	1	+													C
D	+	+	+	+	+	+	+	+	+	+	+	+	+	+	+	+	+	+	+	+	+	+	+	+	+	D
E	+	+	+	+	+	+	+	+	+	+	+	+	+	+	+	+	+	+	+	+	+	+	+	+	+	E
F	+	+	+	+	+	+	+	+	+	+	+	+	+	+	+	+	+	+	+	+	+	+	+	+	+	F
G	+	7	+	8	+	9	+	10	+	11	+	12	+													G
H	+	+	+	+	+	+	+	+	+	+	+	+	+	+	+	+	+	+	+	+	+	+	+	+	+	H
J	+	+	+	+	+	+	+	+	+	+	+	+	+	+	+	+	+	+	+	+	+	+	+	+	+	J
K	+	+	+	+	+	+	+	+	+	+	+	+	+	+	+	+	+	+	+	+	+	+	+	+	+	K
L	+	18	+	17	+	16	+	15	+	14	+	13	+													L
M	+	+	+	+	+	+	+	+	+	+	+	+	+	+	+	+	+	+	+	+	+	+	+	+	+	M
N	+	+	+	+	+	+	+	+	+	+	+	+	+	+	+	+	+	+	+	+	+	+	+	+	+	N
O	+	+	+	+	+	+	+	+	+	+	+	+	+	+	+	+	+	+	+	+	+	+	+	+	+	O
P	+	19	+	20	+	21	+	22	+	23	+	24	+													P
Q	+	+	+	+	+	+	+	+	+	+	+	+	+	+	+	+	+	+	+	+	+	+	+	+	+	Q
R	+	+	+	+	+	+	+	+	+	+	+	+	+	+	+	+	+	+	+	+	+	+	+	+	+	R
S	+	+	+	+	+	+	+	+	+	+	+	+	+	+	+	+	+	+	+	+	+	+	+	+	+	S
T	+	30	+	29	+	28	+	27	+	26	+	25	+													T
U	+	+	+	+	+	+	+	+	+	+	+	+	+	+	+	+	+	+	+	+	+	+	+	+	+	U
V	+	+	+	+	+	+	+	+	+	+	+	+	+	+	+	+	+	+	+	+	+	+	+	+	+	V
W	+	+	+	+	+	+	+	+	+	+	+	+	+	+	+	+	+	+	+	+	+	+	+	+	+	W
X	+	31	+	32	+	33	+	34	+	35	+	36	+													X
Y	+	+	+	+	+	+	+	+	+	+	+	+	+	+	+	+	+	+	+	+	+	+	+	+	+	Y
Z	+	+	+	+	+	+	+	+	+	+	+	+	+	+	+	+	+	+	+	+	+	+	+	+	+	Z

D. R. G. and Associates Inc.
 1414 Elk Street
 Rock Springs, WY 82901
 Telephone Number: 362-5028



STATE OF WYOMING
 Office of Clerk of Recorder
 County of Laramie
 This "corner record" was filed at _____
 On the _____ day of _____
 and was noted on the cross-index plat.

County Clerk _____ Deputy _____
 County: LARAMIE, Wyoming

Corner Name: SOUTH, Section: 33, T.15-16N., R.65W., 6th P.M. Cross-Index No.: Z11

State of Wyoming Corner Record

~28-29-32-33
NONE 1972 RICK HUDSON 519
41 19 07.24N
104 40 23.19W

IRON PIPE
41 19 06.41N
104 39 13.87W

ROAD 222

N 89°25'32" W
5290.00

N 0°31'30" E
5297.17

N 0°34'10" E
5259.87

33

34

T16N R65W

~4-5-32-33
2" BRASS 1972 519
41 18 14.91N
104 40 24.22W

~4-33
2.5" BRASS 1972 519
41 18 14.71N
104 39 49.54W

2.5" ALUMINUM 1993 SSS 2927
41 18 14.45104N
104 39 14.95903W

S 89°53'31" E
2646.82

S 89°46'2" E
2639.20

S 89°45'54" E
5277.76

T15N R65W

N 0°51'42" E
2398.63

N 0°38'45" E
5093.88

4

3

~4-5
4X4X2 AG STONE
41 17 51.21N
104 40 24.87W

N 0°49'41" E
2665.97

Eagle Cr

~4-5-8-9
12X8X4AG STONE GLO
41 17 24.88N
104 40 25.57W

2.5" ALUMINUM 2004 SSS
41 17 24.52515N
104 39 50.87330W

~3-4-9-10
4X5X10AG STONE GLO
41 17 24.13N
104 39 16.11W

N 89°33'18" W
2649.00

N 89°28'5" W
2654.36

9

10

N 0°32'27" E
5307.78

N 0°31'3" E
5291.91

Lodgepole Cr

~8-9-16-17
4" ALUMINUM 2010 STEIL 5910
41 16 32.44N
104 40 25.31W

~9-16
12X11X6AG STONE GLO
41 16 32.03W
41 16 32.30N

~9-10-15-16
7X9X4AG STONE GLO
41 16 31.84N
104 39 16.45W

S 89°57'57" E
2617.11

N 89°19'28" E
2641.08

